

Annual Public Information Meeting

September 24, 2022

Mastodon State Historic Site

Sandy Creek Covered Bridge

State Historic Site

Gov. Dunklin's Grave State

Historic Site

Mastodon, Sandy Creek, and Dunklin's Grave Annual Public Information Meeting Agenda September 24, 2022

- Welcome
- Introductions and Opening Comments
- Previous Year Statistics
- Summary of 2021-22 Activities
- Plans for 2021-22
- Open Forum
- Adjournment

Current Site Staff, 2022

- ▣ Superintendent – Ken Smith (18 years)
- ▣ Assistant Superintendent – Josh LaMouria (10 years with State Parks, 4th year at Mastodon, 2 years as Assistant)
- ▣ Senior Historian/Resource Interpreter – Brooke Mahar (17 years)
- ▣ Senior Maintenance Worker (Parks/Historic Sites)-
Vacant
- ▣ Sandy Creek Caretaker – Brent Myers (45years)
- ▣ Seasonal Maintenance – Chuck Pyatt (25 years)
- ▣ Seasonal Interpreter – Ryan Lane (5 years)
- ▣ Seasonal Interpreter – Barb Hubick (2 years)

Missouri State Park Leadership, 2022

- ▣ Director, Missouri Department of Natural Resources – Dru Buntin
- ▣ Director, Missouri State Parks – David Kelly
- ▣ Deputy Director, Missouri State Parks (Operations) – Laura Hendrickson
- ▣ Deputy Director, Missouri State Parks (Admin)-Brian Stith
- ▣ Director, Eastern Region State Parks – Greg Combs
- ▣ Deputy Regional Director, Eastern Region/North Zone – Kevin Albrecht

State Park Rangers

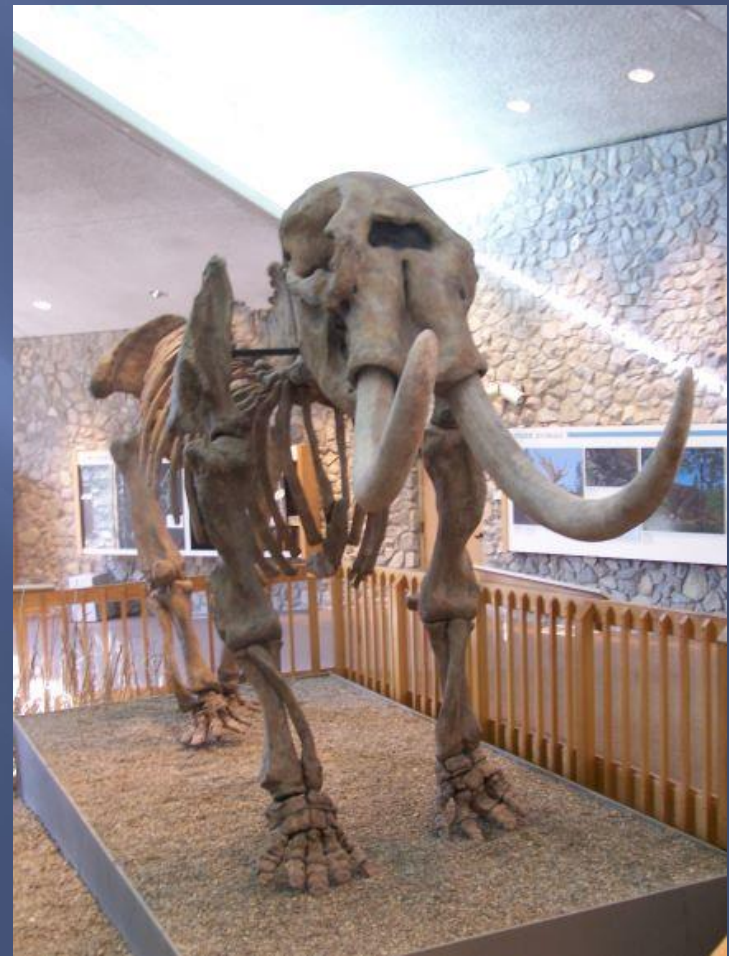
- ▣ State Park Ranger Captain Lucas Anderson-Festus
Regional Office
- ▣ Park Ranger Corporal Chris Crider-St. Francois State
Park
- ▣ Park Ranger DJ McCarty – Mastodon State Historic Site

Special Thanks

- ▣ **Volunteer – Mike Devlin (18 years)**
- ▣ **Missouri Archaeological Society/Three Rivers Chapter**
- ▣ **Mastodon Park Committee**

Mastodon State Historic Site

The mission of Mastodon State Historic Site is to preserve, protect and interpret the Kimmswick Bone Bed; to enhance the understanding and appreciation of archaeological and paleontological sciences and resources; and to provide supporting recreational opportunities.



Sandy Creek Covered Bridge State Historic Site

The mission of Sandy Creek Covered Bridge State Historic Site is; to preserve and interpret a representative example of nineteenth century bridge-building technology; to preserve and interpret important natural and cultural features in the Fort Hill land unit; and in the context of all the above, to provide supporting recreational opportunities.



Gov. Daniel Dunklin's Grave State Historic Site

The mission of Governor Daniel Dunklin's Grave State Historic Site is to preserve and protect the Governor Dunklin family cemetery and interpret the historic significance of Governor Dunklin in Missouri History



Visitation Statistics

Mastodon State Historic Site

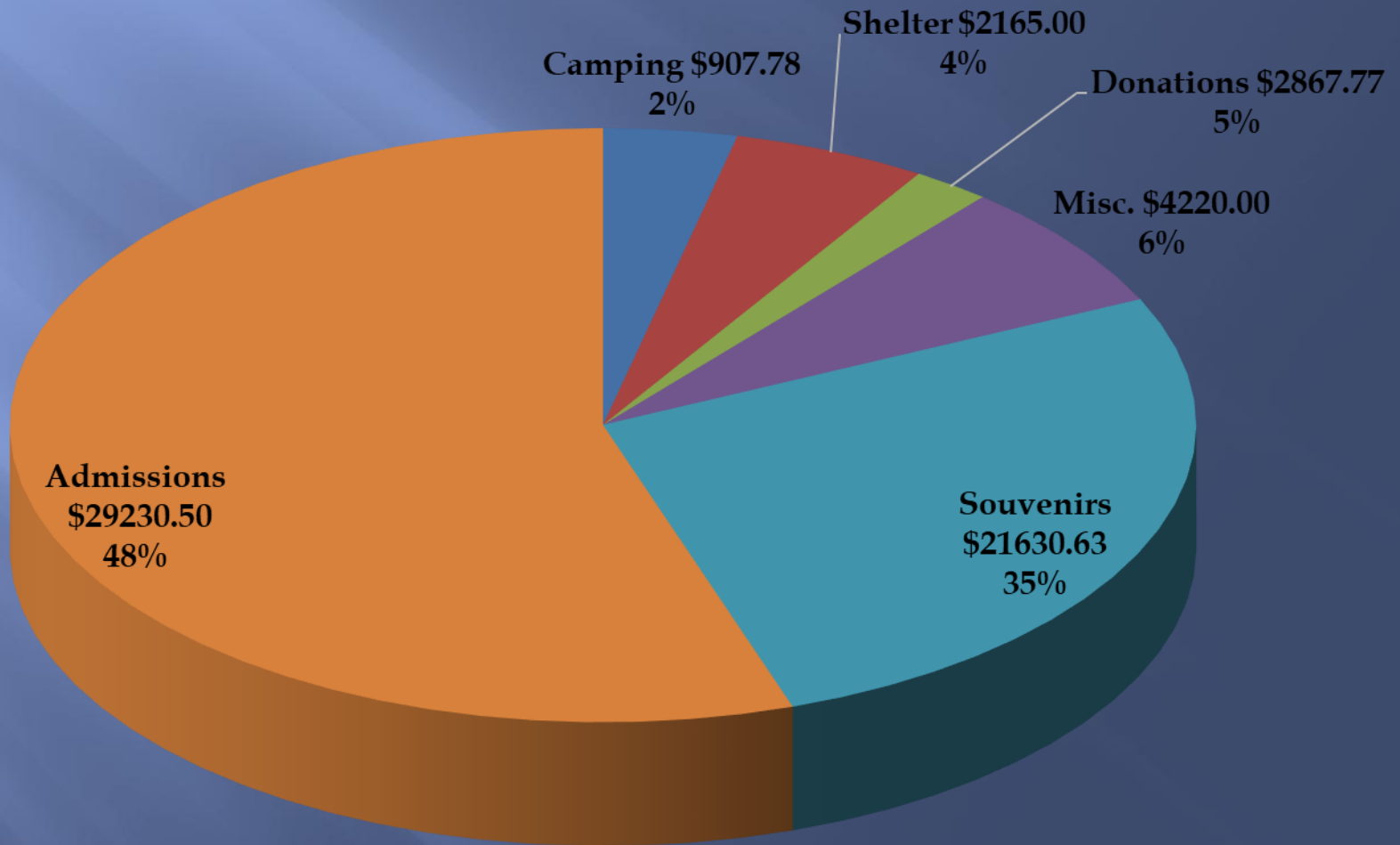
	Sept. 2020-Aug. 2021	Sept.. 2021-Aug. 2022	% Change
Total Attendance:	697,819	711,253	4.5%
Total Day Use Attendance:	682,350	695,644	4%
Total Museum Attendance:	14,688	14,678	4%
Number of Campers:	801	831	80%
Number of Education Programs:	25	45	-44%
Number of Program Attendees:	388	2044	-179%
Souvenir Sales	\$16,488.80	\$21630.63	18%
Total Revenue Collected:	\$53,925.41	\$61,788.56	20%

Sandy Creek Covered Bridge State Historic Site

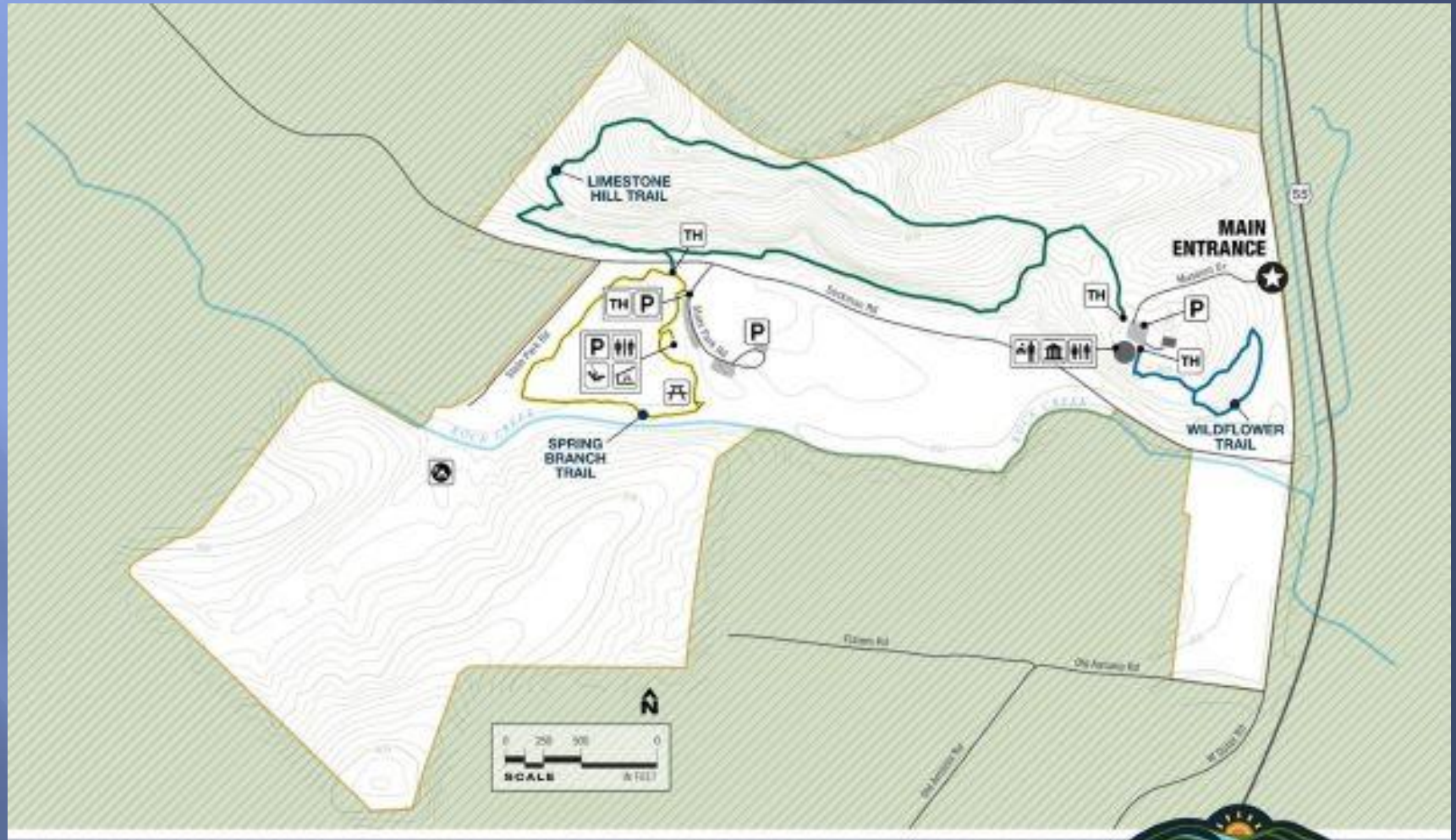
	Sept. 2020-Aug. 2021	Sept. 2021-Aug. 2022	% Change
Total Attendance:	193,058	166436	-2%

Revenue Sources

Mastodon Revenue Sources, Sept. 2021-Aug. 2022
\$61788.66



MASTODON



MASTODON STATE HISTORIC SITE



2022 Items

#1. Museum Operations

- 1) Covid-19 Protocols: We are following Jefferson County current Jefferson County protocols. Masks are optional. Due to immunocompromised staff, every member of the staff on-site has been vaccinated
- 2) Hours for our seasonal staff have become limited throughout the state park system. We are going to continue remaining closed on Mondays and Tuesdays. We will be starting our off-season on Nov. 1 instead of Nov. 15 and on-season will begin Apr. 1 instead of March 16. During the off-season, we will close one additional day per week (Wednesdays) and the museum will open at 11 am instead of 9 am on open days. Sundays will remain open from Noon until 4:00 pm
- 3) All day use activities will remain open daily at 8 am and close ½ hours past sunset

2022 Items

#2. Staff Changes

Maintenance worker Brian Boyet resigned in March

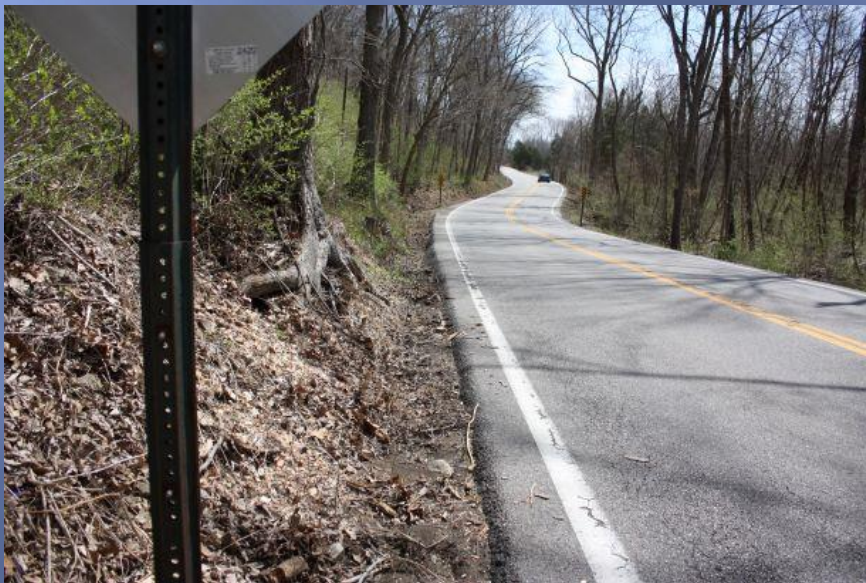
We brought Danny Shepherd to replace Mr. Boyet in June. Unfortunately, Danny resigned in August, but enjoyed working here. He decided to remain on at one of our seasonal employees

Ranger DJ McCarty completed his training and, although he does watch over several sites, his official home site is Mastodon. Ranger McCarty is the first Ranger to be assigned to Mastodon in over 10 years.

2022 Items

#3. Seckman Road

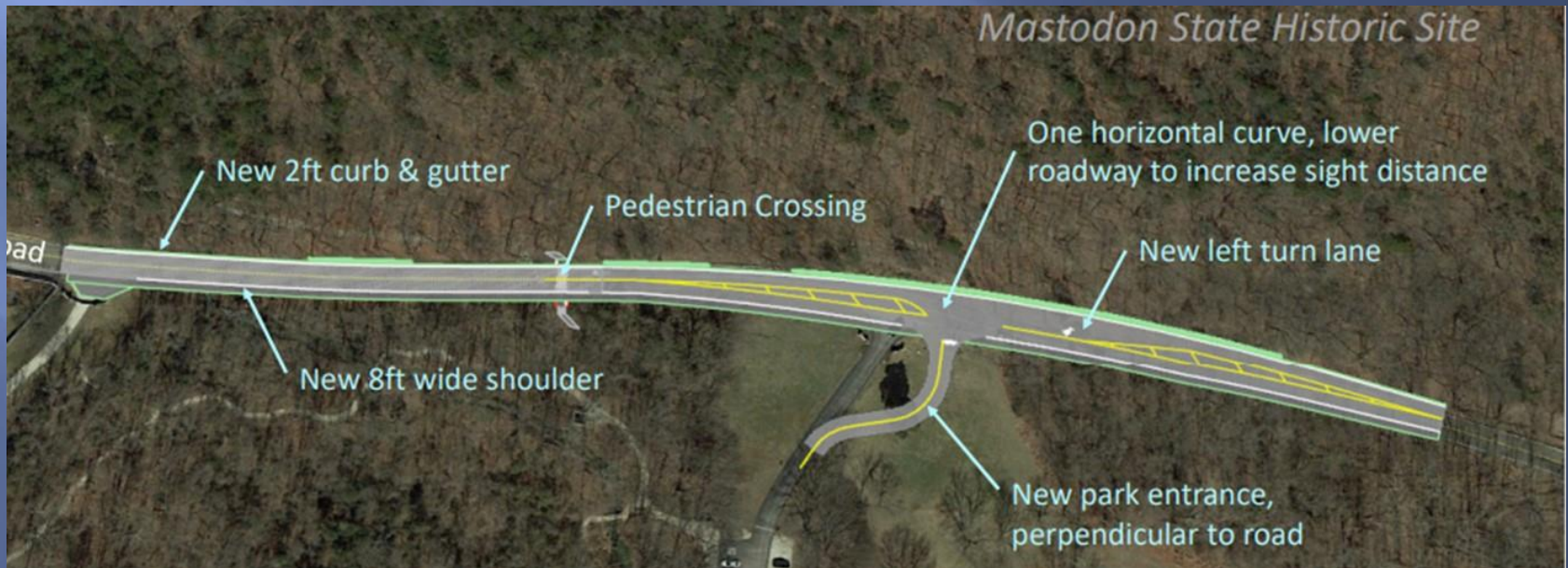
Jefferson County decided to delay the start of the Seckman Road widening project. 1) combined phase 1 and 2 into one large project to begin in 2023 and 2) there is a road closure on Old Lemay Ferry Road at West Rock Creek. They did not want to restrict traffic on one of their detour routes.



2022 Items

#3. Seckman Road

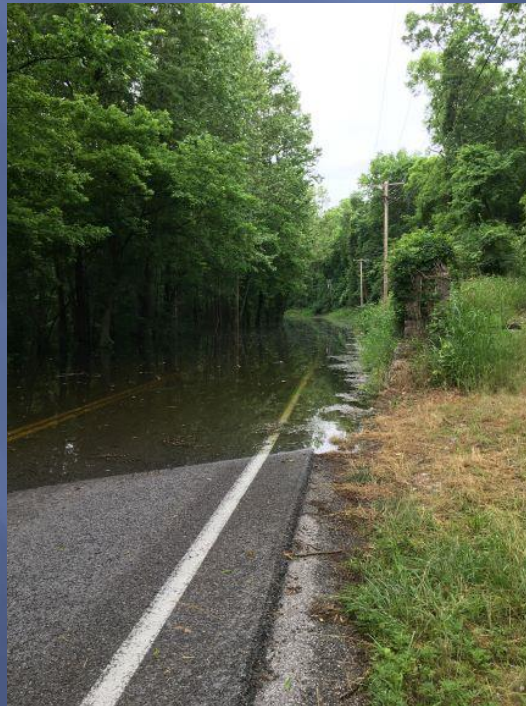
Original Phase 1: 1) Add 8' shoulder on south side. 2) Add 3' gutter on north side. 3) Shave rise at the picnic area entrance to eliminate limited view. 4) reroute picnic area entrance so turn is straight instead of at an angle. 5) Add west bound turn lane 6) make Limestone Hill Trail crosswalk straight across instead of angles 7) will go from Special Use Area Entrance to 200 yards west of picnic area entrance



2022 ITEMS

#3. Seckman Road

Original phase 2: In addition to the shoulder additions this will 1) raise the road in the area just east of the power line cut to be above the 100 year flood level 2) straighten the road and shave some of the rises where necessary. Public meetings were held in 2021. This will extend from the end of project phase 1 to where Seckman Road widens closer to West Outer Road.



2022 Items

#4. Wildflower Trail Steps

- ▣ We replaced the upper tier of steps on the Wildflower Trail in November and December



2022 Items

#6 Trees

There has been a Division of State Parks initiative to monitor trees within all facilities for hazardous conditions. We have been monitoring and removing trees that are hazardous to the public as necessary. This coming winter, we will be removing a majority of the trees in the picnic area

Most ash trees are dead or dying, and a lot of the oak trees are showing signs of a blight. Severe weather patterns in the summer months over the past few years have played havoc on them. We will try to replace them over the next few years.

2022 Items

Tree Removal Pictures



2022 Items

Programs and Events



Excursion destination
for riverboats that dock
in Kimmswick

Summer Education Programs

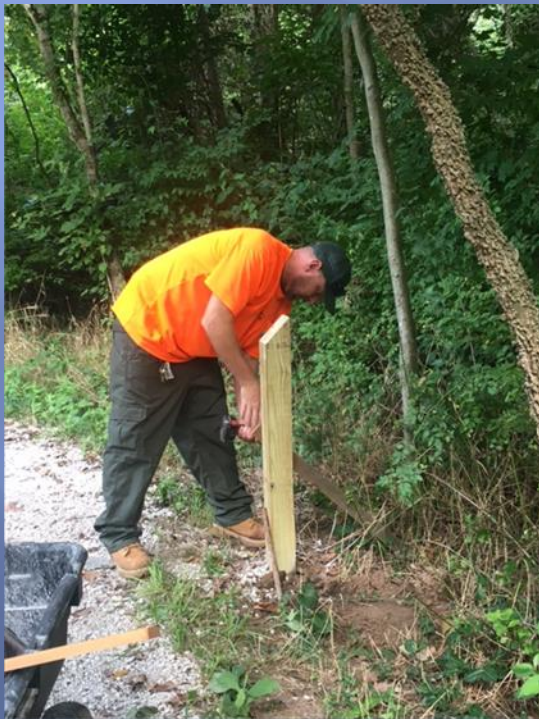


School field Trip
Programs

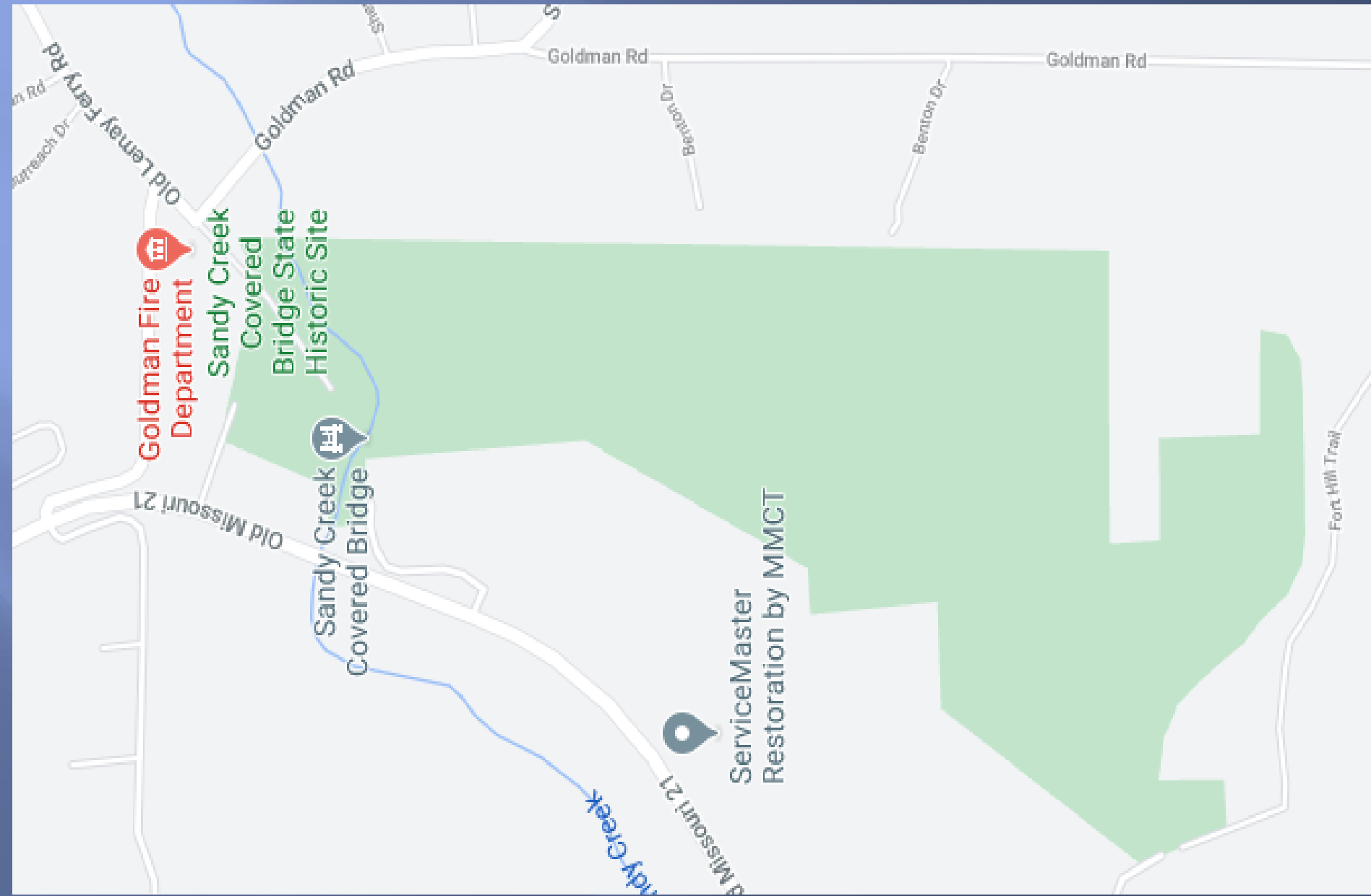
2022 Items

Storybook Trail

With panels provided by Jefferson County Library and funding from the Mastodon Park Committee, a Storybook Trail was installed on the sprong Branch Trail



Sandy Creek



Sandy Creek

Special thanks to Caretakers Brent and Butch Myers, as well as neighbor Matt Schraut, for keeping an eye on things and reporting possible questionable activity. Everyone does a great job of ensuring the site stays clean and safe for the visitors. Due to their efforts, the Missouri State Park Rangers have been increasing their presence in the area to try to curb reported illegal activities.

Sandy Creek

Jefferson College Volunteer Work Day



Painting the approach rails

Lining the culverts to facilitate drainage



Sandy Creek



We have been trying to increase our program offerings at Sandy Creek.

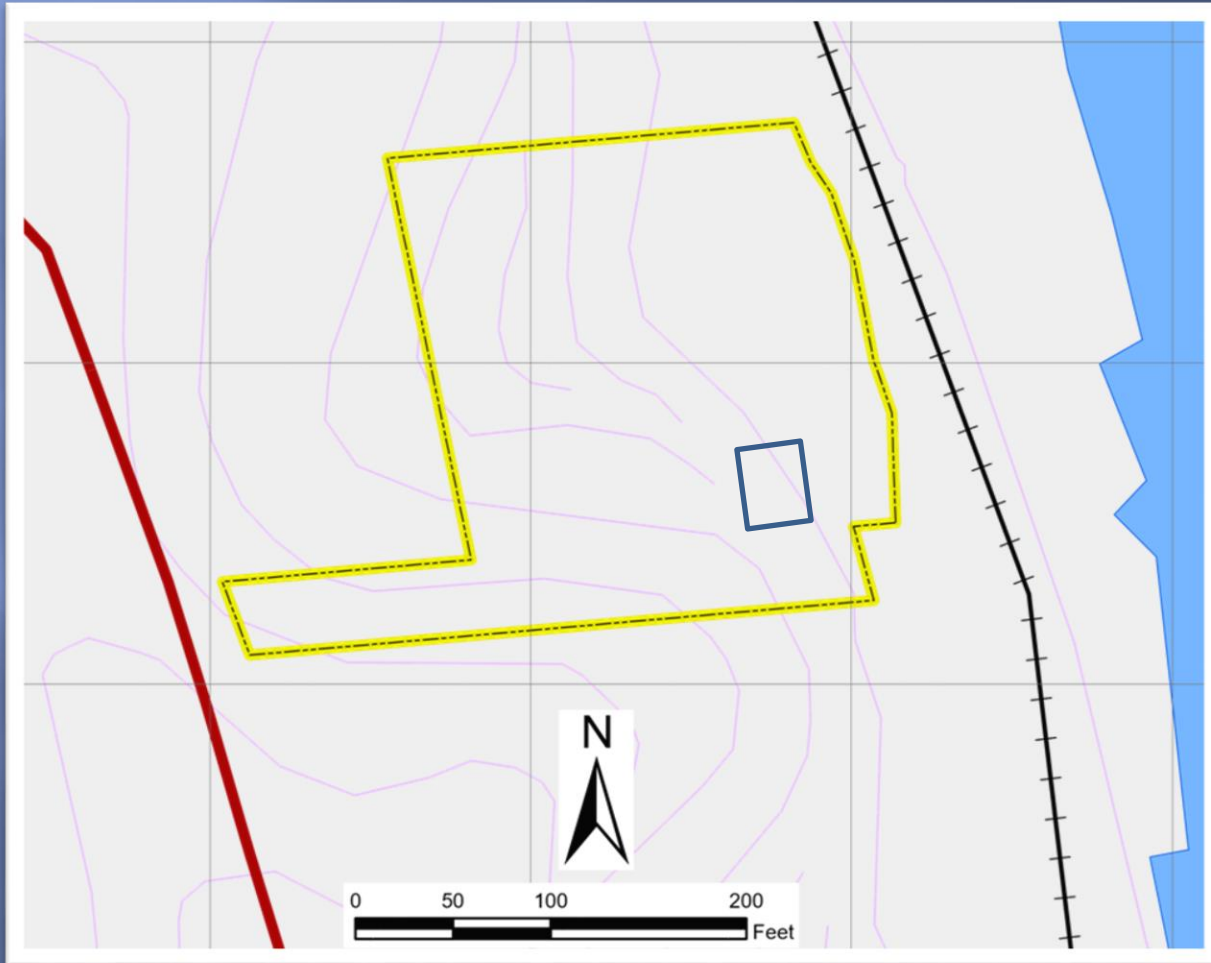
In the past we have presented Watercolor Painting. This year, we have had a representative from NASA conduct stargazing programs. Next one is Oct. 1

Sandy Creek

Efforts continue to restore the glades in the more remote areas of the site. This will be done by clearing non-native plants through cutting and possible strategic burning of designated areas.



DUNKLIN'S GRAVE



Dunklin's Grave

Erosion of the pathways continues to be a major issue. We are looking at the best way to mitigate with minimal impact on the site. We have submitted a proposal to do a large project for this issue



Dunklin's Grave

- ▣ It has been a struggle with taking care of the flowering plants that had been planted at the site. Due to staff shortages: limited staff availability, uncooperative weather patterns, and other demands, we have not been able to maintain Dunklin's Grave as we feel is necessary. This year, we planted all grass seed in an effort to restore the area where an unknown herbicide was used by a non-parks entity. Once allowed to grow, the grass will be easier for our staff to maintain, as we will be able to cut as part of our routine maintenance and the area will have an even greenspace look. Once fully staffed, this will be attended to every other week

Dunklin's Grave

- ▣ We planted grass seed in the spring, but the extreme weather events-hot, then rain, then hot again, stunted its growth. Will plant more in the fall
- ▣ Continuing efforts to mitigate erosion. Unfortunately, the 2021 herbicide incident has made erosion worse.
- ▣ Visitation for Dunklin's Grave:
 - 2,351-Sept. 2020 to Aug. 2021
 - 1,689-Sept. 2021 to Aug. 2022

On the Horizon

Mastodon:

- Reconfigure the museum entrance to be more ADA accessible
- Continue hazard tree mitigation
- Relocate the collection from ISM to Mastodon
- Seckman Road widening (Jefferson County)
- As funding permits, we will be acquiring materials for replacing the lower section of stairs on the Wild Flower Trail
- Replace Museum water heaters

Sandy Creek:

- Work on picnic area/hazard tree mitigation
- Work with State Park Rangers on security issues
- Replace damaged siding

Dunklin's Grave:

- Work on grass project
- Clear overlook/hazard tree mitigation
- Ongoing erosion control. Work with Regional Office and Planning and Development for a better solution
- Possibly install new exhibit panels

Q & A

Thank you for coming and
offering your input